

STREET DESIGN & PLACEMAKING GUIDELINES



Core Streets

Minimum Requirements	The buildings are 6-stories and up and are oriented onto the sidewalk
	Minimum FAR: 0.60
	Minimum Height: 55'
	Minimum Frontage: 85%
	Maximum Parking: 1 space/350sf



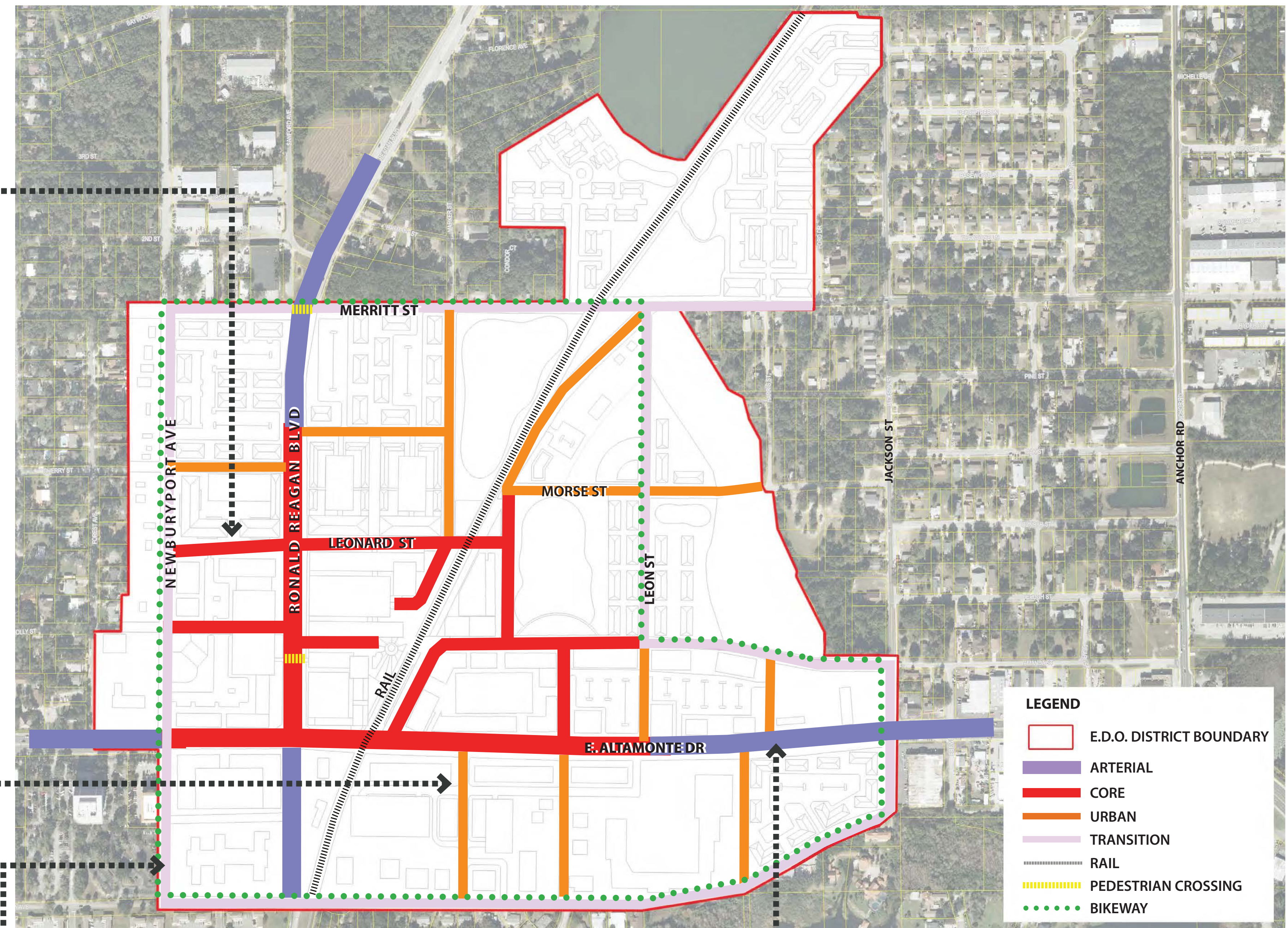
Urban Streets

Minimum Requirements	3-story buildings with parking in the rear and the building fronting the sidewalk
	Minimum FAR: 0.4
	Minimum Height: 27'
	Minimum Frontage: 75%
	Maximum Parking: 1 space/300sf



Transition Streets

Minimum Requirements	1-story buildings with parking in the rear and the building fronting the sidewalk
	Minimum FAR: 0.25
	Minimum Height: 18'
	Minimum Frontage: 65%
	Maximum Parking: 1 space/250sf



Arterial Streets

Minimum Requirements	1-story buildings with parking in the rear and the building fronting the sidewalk
	Minimum FAR: 0.25
	Minimum Height: 18'
	Minimum Frontage: 65%
	Maximum Parking: 1 space/300sf