

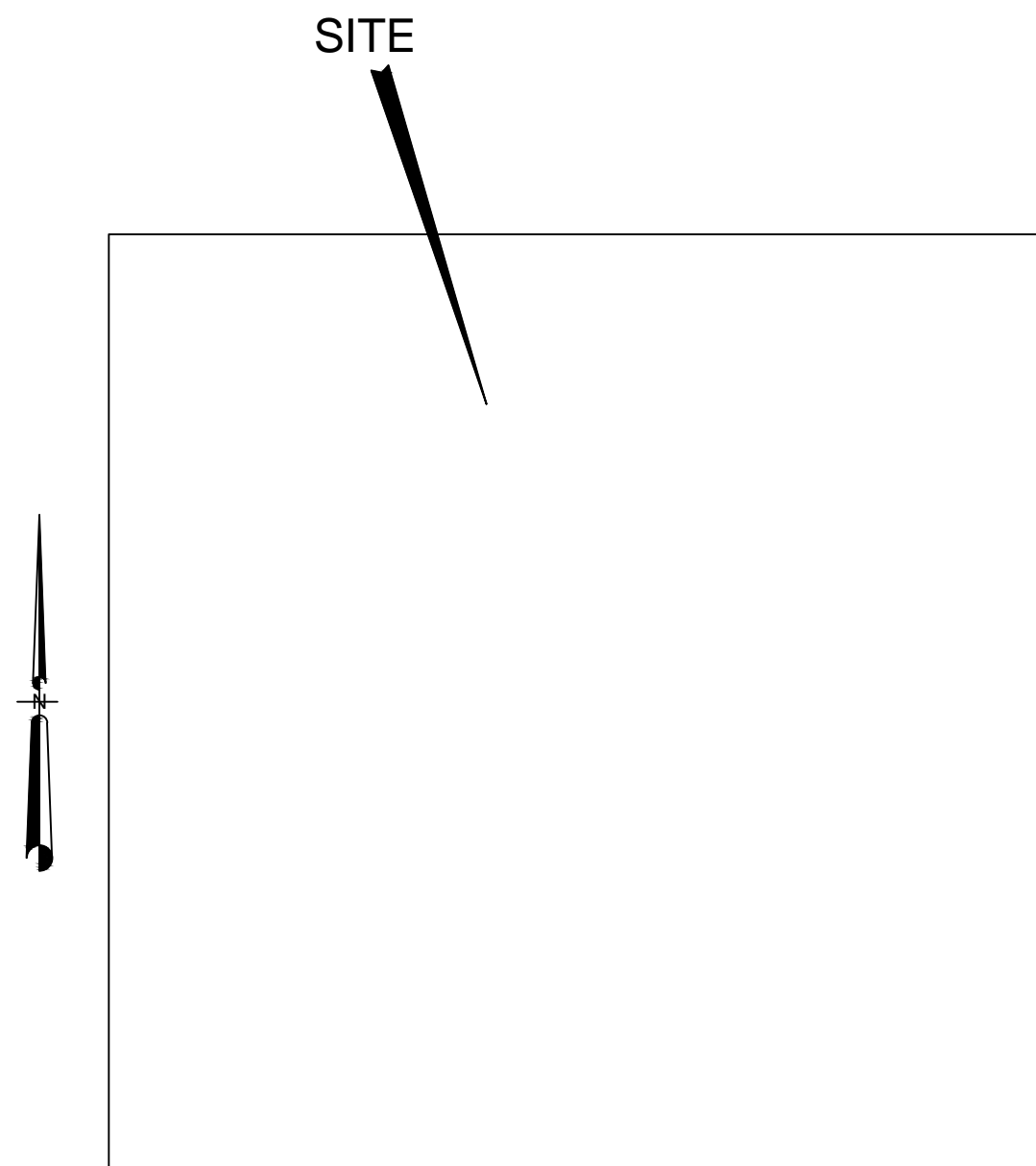
# EDIT PROJECT TITLE HERE

## CITY OF ALTAMONTE SPRINGS



for

### City of Altamonte Springs, Florida Public Works



Location Map

#### INDEX OF DRAWINGS

SHT. NO.	DESCRIPTION
CS	Cover Sheet
SP	Specifications
3	Site
4	Site
5	Site
6	Site
7	Site
8	Standard Details

EDIT / UPDATE  
AS REQUIRED

#### UTILITY CONTACTS

TELEPHONE  
CENTURY LINK  
800-432-4770

ELECTRIC  
PROGRESS ENERGY CORPORATION  
407-629-1010

WATER/ RECLAIMED WATER/SEWER  
CITY OF ALTAMONTE SPRINGS  
407-571-8340

UTILITY LOCATES  
SUNSHINE 811

EDIT / UPDATE  
AS REQUIRED

PAT BATES  
Mayor

GARDNER HUSSEY  
Commissioner

LUCIUS CUSHMAN  
Commissioner

SARAH REECE  
Commissioner

JON BATMAN  
Commissioner

FRANKLIN W. MARTZ II  
City Manager

ED TORRES, PE, LEED AP  
Director of Public Works & Utilities

NEIL C. RADER, PE  
City Engineer, Division Director of Engineering

EDIT / UPDATE  
AS REQUIRED

Prepared By: City of Altamonte Springs Public Works Department  
225 Newburyport Avenue  
Altamonte Springs, Florida 32701

Project Designer:

City Engineer:

100% Plans  
(DATE)

SYMBOL	REVISIONS	BY	DATE	APPRVD

2017  
ENGINEERING  
AND  
DESIGN  
STANDARDS  
(SEAL AREA)

DESIGNED BY:	X
DRAWN BY:	X
PROJECT ENGR:	X
CHECKED BY:	X
APPROVED BY:	X
Sealed By:	XXXX, P.E.
FL. Reg. No.	XXXXXX

CITY OF ALTAMONTE SPRINGS PUBLIC WORKS ADMINISTRATION 225 NEWBURYPORT AVE, ALTAMONTE SPRINGS, FLORIDA 32701	DATE: X SCALE: X
1	
SHEET 1 OF 1	